

# SVSBIM SOLUTIONS



[www.svsbim.com](http://www.svsbim.com)



# About US :-

SVS BIM Solutions offers Building Information Modelling (BIM) Services to Architecture, Engineering & Construction (AEC) firms worldwide. We help our clients by providing BIM services for construction projects to facilitate project coordination, collaboration, asset management, risk mitigation, logistic planning and cost optimisation. For better workflow and productivity we have separate teams with BIM Professionals collaborating each other across different time zones.

Our teams has successfully executed BIM projects in several countries globally. Few of the landmark BIM projects include Airports, Metro, Hospitals, Medical Centers, Stadium, High Rise Towers, Infrastructure, University Campus and more executed in USA, UK, Middle East & Gulf Cooperation Council (GCC), Europe & Australia.

Seek our BIM implementation to revolutionise your construction. For more information on BIM, please contact [info@svsbim.com](mailto:info@svsbim.com)



## OUR SERVICES ▶▶

- **ABOUT US**
- **ARCHITECTURAL SERVICES**
- **STRUCTURAL SERVICES**
- **MECHANICAL SERVICES**
- **ELECTRICAL SERVICES**
- **PLUMBINGSERVICES**
- **4D SERVICES**
- **5D SERVICES**
- **FACILITY MANAGEMENT SERVICES**
- **SCAN TO BIM SERVICES**
- **DRAFTING SERVICES**
- **BIM RESOURCE MANAGEMENT**
- **CONSTRUCTION SAMPLES**





### ARCHITECTURAL MODELLING

Architectural models are a good way of presenting a 3D version of your architectural design, interior design or urban design project. They give you a sense of how the different elements will feel in reality combined together.



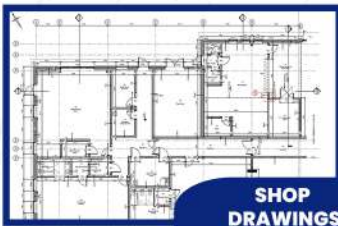
### INTERIOR MODELLING

Interior models are essentially a spatial floor plan of an apartment, office, hotel, or structure with various functions. In general, interior models are fabricated on the basis of the interior design concept, 3D architectural rendering, sketches.



### LANDSCAPE MODELLING

Landscape plans include natural elements like flowers, trees, and grass as well as man-made elements such as lawn furniture, fountains, and sheds. Landscape designs may also include overlays for Topography, Roads, irrigation and lighting.



### SHOP DRAWINGS

Shop Drawings are created based on project standards and are useful to contractors, fabricators, suppliers and manufacturers during construction. BIM is highly useful for construction of any irregular or complex structures. We generate accurate sleeves, penetration and hanger locations from the BIM model before start of construction.



### RENDERING SERVICES

The building's model, with its three-dimensional representation, can then be ultimately expressed through a highly detailed, life like rendering. The entire model is then covered with HD materials (textures) and illuminated by an artificial lighting scheme to correctly reproduce the true effects of our design choices.



### WALKTHROUGHS SERVICES

Making use of 3D walkthrough animation helps you to develop a cybernetic guide of your projects covering entire macro as well as micro details along with fascinating features. The technology carried with it has amazing potential to attract the attention of prospects and they can understand the upsides of projects even before the construction starts



### FACADE MODELLING

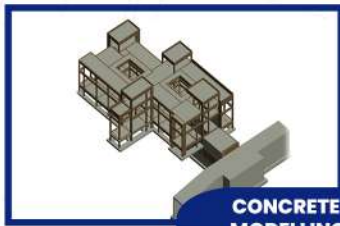
Facade architectural model is a creative production with a particular emphasis on the intricate architectural appearance details. Traditional hand-crafted skills are also needed to show a high level of detail according to clients' requests.



### MATERIAL TAKE OFF

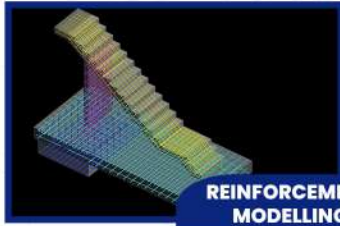
Material take-offs (MTO) are a detailed measurement of materials and labour needed to complete a construction project. They are developed by an estimator during the pre-construction phase. These measurements are used to format a bid on the scope of construction. For the Material quantity take off we are working on revit, Synchro 4d & Cobie.





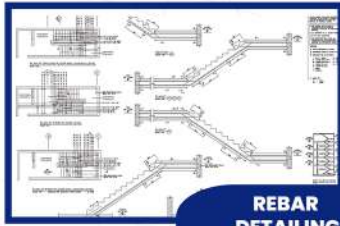
**CONCRETE MODELLING**

We offer structural 3D modelling services that enable product/ structure visualization, preview building structures or prototype and expand the viewer's imaginative capability. We have extensive skill base, expertise, and experience that allow us to execute structural 3D modelling projects using a range of software/applications.



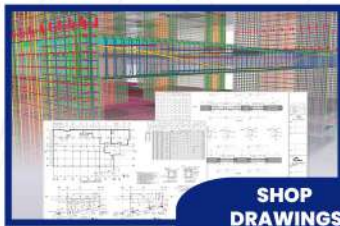
**REINFORCEMENT MODELLING**

Reinforcement Modelling is the discipline of preparing shop drawings of steel reinforcement for construction. They call out the quantity, description, placement, bending shapes with dimensions and laps of the reinforcing steel.



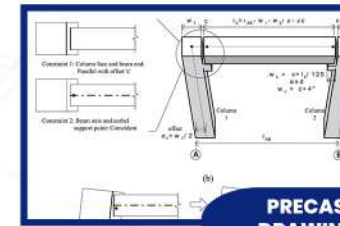
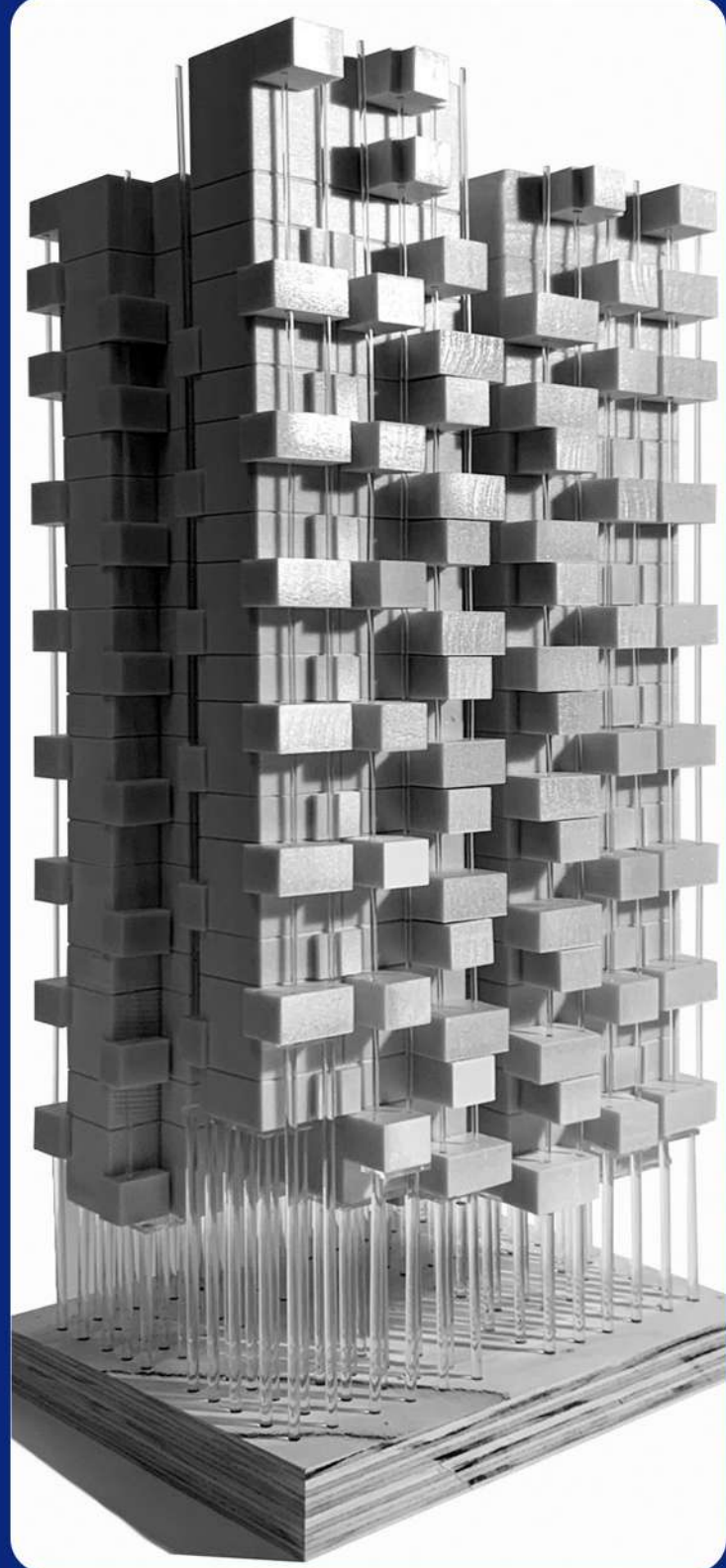
**REBAR DETAILING**

Rebar Design & Detail provides absolute detailing and estimation services to rebar fabricators, contractors and structural consultants across the globe by using software's like revit structures, tekla and etabs



**SHOP DRAWINGS**

Shop Drawings are created based on project standards and are useful to contractors, fabricators, suppliers and manufacturers during construction. BIM is highly useful for construction of any irregular or complex structures. We generate accurate sleeves, penetration and hanger locations from the BIM model before start of construction.



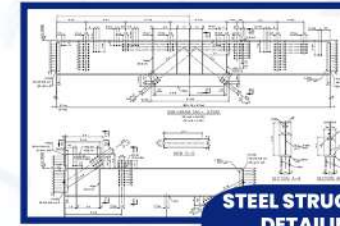
**PRECAST DRAWINGS**

Shop drawings are graphic diagrams of precast concrete units and their connecting hardware, developed from information in the contract documents. We show information needed for both field assembly (erection) and manufacture (production) of the precast concrete.



**STEEL STRUCTURE MODELLING**

Steel Structure is a category used for making construction in a variety of shapes. Steel structures includes construction of its foundations, columns, beams and floors systems. It connect with each other to carry loads and provide full rigidity



**STEEL STRUCTURE DETAILING**

Our steel detailers are well versed in using the latest versions of the software, which includes Tekla Structures, Autodesk Revit, AutoCAD, SDS/2 and Advance Steel.

COMPARISON TABLE									
Item No.	Particulars	Unit	Quantity	Rate	Amount	Unit	Quantity	Rate	Amount
1	...	...	...	...	...	...	...	...	...
2	...	...	...	...	...	...	...	...	...
3	...	...	...	...	...	...	...	...	...
4	...	...	...	...	...	...	...	...	...
5	...	...	...	...	...	...	...	...	...
6	...	...	...	...	...	...	...	...	...
7	...	...	...	...	...	...	...	...	...
8	...	...	...	...	...	...	...	...	...
9	...	...	...	...	...	...	...	...	...
10	...	...	...	...	...	...	...	...	...
11	...	...	...	...	...	...	...	...	...
12	...	...	...	...	...	...	...	...	...
13	...	...	...	...	...	...	...	...	...
14	...	...	...	...	...	...	...	...	...
15	...	...	...	...	...	...	...	...	...
16	...	...	...	...	...	...	...	...	...
17	...	...	...	...	...	...	...	...	...
18	...	...	...	...	...	...	...	...	...
19	...	...	...	...	...	...	...	...	...
20	...	...	...	...	...	...	...	...	...
21	...	...	...	...	...	...	...	...	...
22	...	...	...	...	...	...	...	...	...
23	...	...	...	...	...	...	...	...	...
24	...	...	...	...	...	...	...	...	...
25	...	...	...	...	...	...	...	...	...
26	...	...	...	...	...	...	...	...	...
27	...	...	...	...	...	...	...	...	...
28	...	...	...	...	...	...	...	...	...
29	...	...	...	...	...	...	...	...	...
30	...	...	...	...	...	...	...	...	...
31	...	...	...	...	...	...	...	...	...
32	...	...	...	...	...	...	...	...	...
33	...	...	...	...	...	...	...	...	...
34	...	...	...	...	...	...	...	...	...
35	...	...	...	...	...	...	...	...	...
36	...	...	...	...	...	...	...	...	...
37	...	...	...	...	...	...	...	...	...
38	...	...	...	...	...	...	...	...	...
39	...	...	...	...	...	...	...	...	...
40	...	...	...	...	...	...	...	...	...
41	...	...	...	...	...	...	...	...	...
42	...	...	...	...	...	...	...	...	...
43	...	...	...	...	...	...	...	...	...
44	...	...	...	...	...	...	...	...	...
45	...	...	...	...	...	...	...	...	...
46	...	...	...	...	...	...	...	...	...
47	...	...	...	...	...	...	...	...	...
48	...	...	...	...	...	...	...	...	...
49	...	...	...	...	...	...	...	...	...
50	...	...	...	...	...	...	...	...	...
51	...	...	...	...	...	...	...	...	...
52	...	...	...	...	...	...	...	...	...
53	...	...	...	...	...	...	...	...	...
54	...	...	...	...	...	...	...	...	...
55	...	...	...	...	...	...	...	...	...
56	...	...	...	...	...	...	...	...	...
57	...	...	...	...	...	...	...	...	...
58	...	...	...	...	...	...	...	...	...
59	...	...	...	...	...	...	...	...	...
60	...	...	...	...	...	...	...	...	...
61	...	...	...	...	...	...	...	...	...
62	...	...	...	...	...	...	...	...	...
63	...	...	...	...	...	...	...	...	...
64	...	...	...	...	...	...	...	...	...
65	...	...	...	...	...	...	...	...	...
66	...	...	...	...	...	...	...	...	...
67	...	...	...	...	...	...	...	...	...
68	...	...	...	...	...	...	...	...	...
69	...	...	...	...	...	...	...	...	...
70	...	...	...	...	...	...	...	...	...
71	...	...	...	...	...	...	...	...	...
72	...	...	...	...	...	...	...	...	...
73	...	...	...	...	...	...	...	...	...
74	...	...	...	...	...	...	...	...	...
75	...	...	...	...	...	...	...	...	...
76	...	...	...	...	...	...	...	...	...
77	...	...	...	...	...	...	...	...	...
78	...	...	...	...	...	...	...	...	...
79	...	...	...	...	...	...	...	...	...
80	...	...	...	...	...	...	...	...	...
81	...	...	...	...	...	...	...	...	...
82	...	...	...	...	...	...	...	...	...
83	...	...	...	...	...	...	...	...	...
84	...	...	...	...	...	...	...	...	...
85	...	...	...	...	...	...	...	...	...
86	...	...	...	...	...	...	...	...	...
87	...	...	...	...	...	...	...	...	...
88	...	...	...	...	...	...	...	...	...
89	...	...	...	...	...	...	...	...	...
90	...	...	...	...	...	...	...	...	...
91	...	...	...	...	...	...	...	...	...
92	...	...	...	...	...	...	...	...	...
93	...	...	...	...	...	...	...	...	...
94	...	...	...	...	...	...	...	...	...
95	...	...	...	...	...	...	...	...	...
96	...	...	...	...	...	...	...	...	...
97	...	...	...	...	...	...	...	...	...
98	...	...	...	...	...	...	...	...	...
99	...	...	...	...	...	...	...	...	...
100	...	...	...	...	...	...	...	...	...

**MATERIAL TAKE OFF**

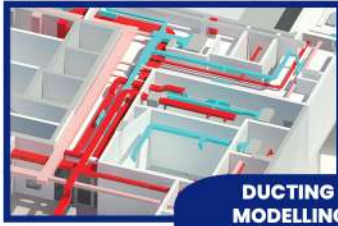
Material take-offs (QTO) are a detailed measurement of rebar materials and labour needed to complete a construction project. They are developed by an estimator during the pre-construction phase. These measurements are used to format a bid on the scope of construction. For the steel quantity take off we are working on revit, tekla.





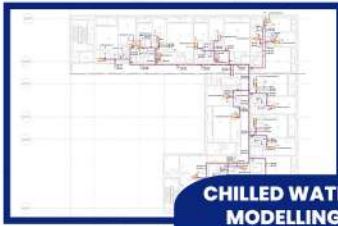
### HVAC DESIGN SERVICES

It is a type of engineering that focuses on creating a safe environment for human use. Have responsible for planning and design in the areas of mechanical, electrical, plumbing and Firefighting (MEPF) systems including developing polices, standards, inspection procedures, and evaluation tools.



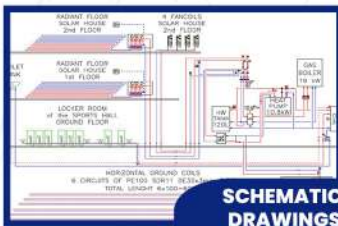
### DUCTING MODELLING

Ducts are conduits or passages used in heating, ventilation, and air conditioning (HVAC) to deliver and remove air. The needed airflows include, for example, supply air, return air, and exhaust air. Ducts commonly also deliver ventilation air as part of the supply air. We model BIM services based on the input CAD, PDF and from the IFC design files as per specifications and standards required.



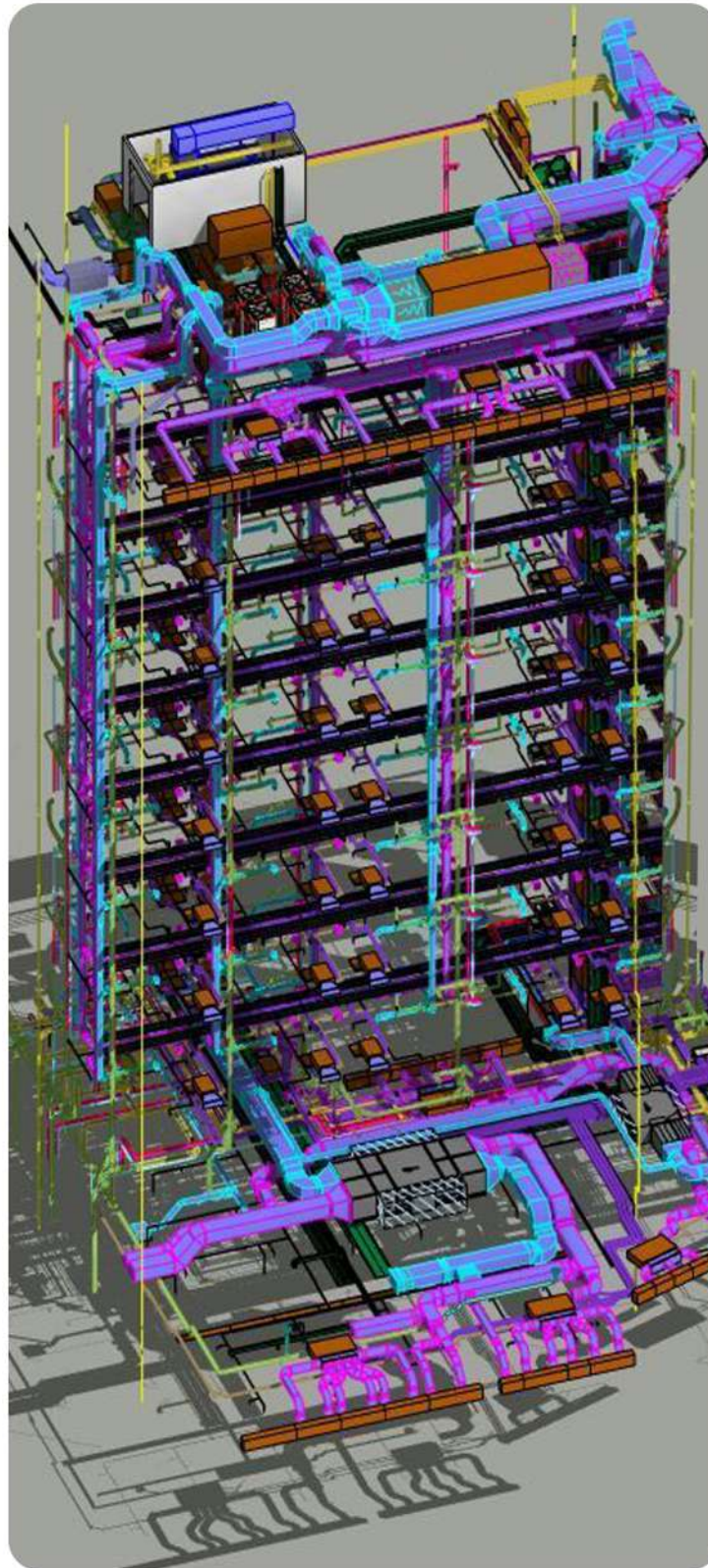
### CHILLED WATER MODELLING

Chilled water air conditioning systems are commonly used in applications that need large cooling capacity such as hypermarket, industrial process. It is used to remove heat from the water which is then circulated through other components to absorb heat from the space. Water is non-corrosive, has specific heat value, fluid, non-toxic and is cheap.



### SCHEMATIC DRAWINGS

A schematic diagram is a visual representation of the various units and their functioning.



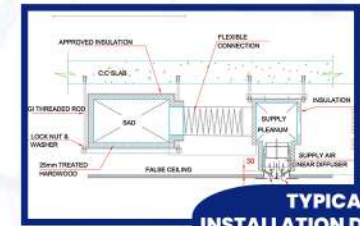
### MEP FABRICATION DRAWINGS

A step on from installation drawings are fabrication drawings. We have often produced fabrication drawings from our coordinated ductwork model. When doing these drawings we liaise with the ductwork fabricator to ascertain their standard manufacturing dimensions such as cut-length and gasket thickness.



### MECHANICAL PLANTROOM MODELLING

A plant room is a room or space in a building dedicated to the mechanical equipment and its associated electrical equipment, as opposed to rooms intended for human occupancy or storage. Equipment in plant rooms is monitored by the BMCS (Building Management and Control System) and administered by staff from Property



### TYPICAL INSTALLATION DRAWINGS

With the help of shop drawings we produce detail drawings for installation & fabrication of HVAC or mechanical components which may require prefabrication include ductwork, air-handling units, and custom piping connections between equipment and building services



### SHOP DRAWINGS

Shop Drawings are created based on project standards and are useful to contractors, fabricators, suppliers, and manufacturers during construction. BIM is highly useful for construction of any irregular or complex structures. We generate accurate Dimensions, Tagging and hanger locations from the BIM model before start of construction.





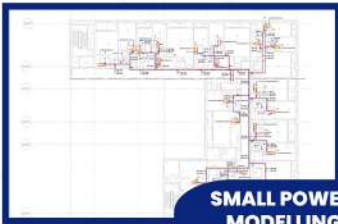
### ELECTRICAL DESIGN SERVICES:

Every building structure necessarily requires electrical systems for the proper functioning of the whole building. We model the Electrical Equipment, Conduits, Cable Trays, Lighting Fixtures, Communication & Data Transmission devices, Network Routing and Fire Alarm Systems etc. we can easily produce the required construction



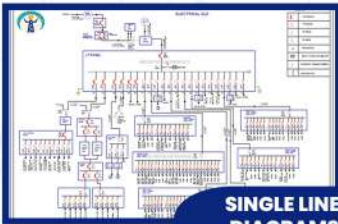
### LIGHTING MODELLING

We provide lighting design calculation by using softwares like dialux, relux and ecoal and families creations as per the manufactures requirement and modelling by REVIT and Aecosim



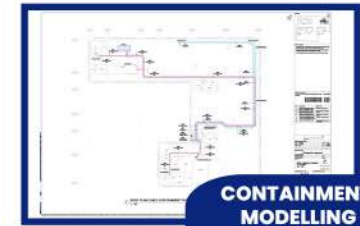
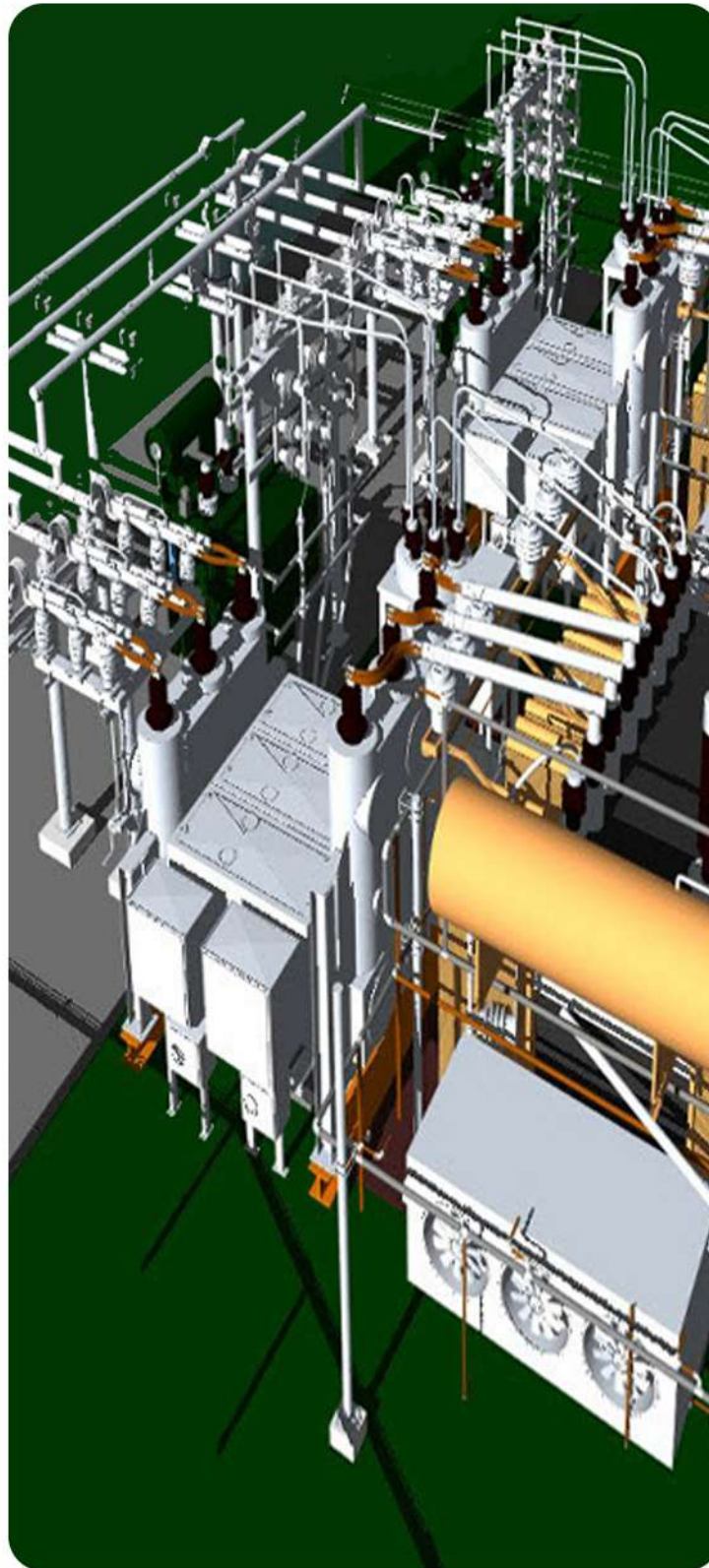
### SMALL POWER MODELLING

Providing completing sockets designing as per the local and international regulations like NEC, DEWA, BS and BCA. Modelling and circuiting by using softwares like REVIT and Aecosim.



### SINGLE LINE DIAGRAMS

A schematic diagram is a visual representation of the various units and their functioning.



### CONTAINMENT MODELLING

We provide cable tray layouts with complete detailing for the site constructions with support details and substation designing and modelling with trench layouts, transformer yards with complete electrical room scaping.



### SUBSTATION MODELLING

A plant room is a room or space in a building dedicated to the mechanical equipment and its associated electrical equipment, as opposed to rooms intended for human occupancy or storage. Equipment in plant rooms is monitored by the BMCS (Building Management and Control System) and administered by staff from Property



### FIRE ALARM

We provide you with smart products and solutions, designed to let you rest assured that your lives will not only be protected, but quickly and effectively saved. We work as per the Standards of NFPA & DEWA.



### BMS MODELLING

We provide you with smart products and solutions, designed to let you rest assured that your lives will not only be protected, but quickly and effectively saved. We work as per the Standards of NFPA & DEWA.

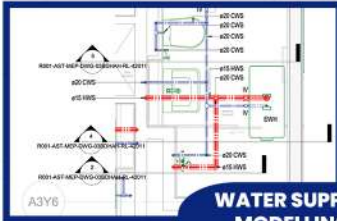






### PLUMBING DESIGN SERVICES

We create plumbing and piping systems that work within the particular needs or specifications of a building or construction project. Plumbing designers are as necessary as any other architect or engineer working on a building project.



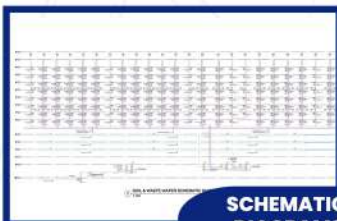
### WATER SUPPLY MODELLING

Domestic water supply system basically means consumption of water by human beings for purposes, such as drinking, cooking, personal ablution, washing clothes, utensils and yards or rooms and flushing toilets.



### DRAINAGE MODELLING

It's a system in which all the piping, which conveys sewage, rainwater or other liquid wastes to a legal point of disposal. It does not include the mains of public sewer system or a public sewage treatment or disposal plant.



### SCHEMATIC DIAGRAMS

A schematic diagram is a visual representation of the various units and their functioning.



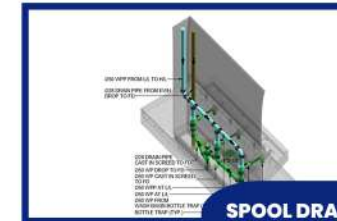
### FIRE FIGHTING MODELLING

A firefighting system is probably the most important of the building services, as it aims to protect human life and property. It has a large network of pipes ending in either hydrants or sprinklers.



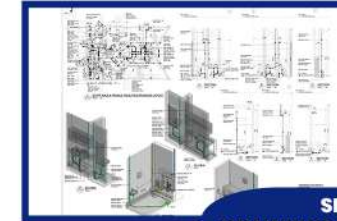
### PLUMBING PLANTROOMS MODELLING

Commercial and domestic hot water and/or central heating plant rooms designed and built off-site according to specific installation requirements.



### SPOOL DRAWINGS

A pipe spool drawing is optimized to provide all the information needed by the fabricator to accurately manufacture or assemble the spool. Spool drawing furnishes the complete information of all parts welded together in the shop on a single drawing.



### SHOP DRAWINGS PREPARATION

Shop Drawings are created based on project standards and are useful for contractors, fabricators, suppliers, and manufacturers during construction. BIM is highly useful for construction of any irregular or complex structures. We generate accurate Dimensions, Tagging and hanger locations from the BIM model before start of construction.





## BIM RESOURCE MANAGEMENT:

We believe in responding to the immediate demands and needs of employers and that is why a lot of clients come to us to fulfill their needs for manpower. Whether it is design and site engineers, modelers and draft-mans in the field of construction. We believe in supplying the best manpower in all areas of our service. No matter if the requirement is for small residential or for larger projects we have the required manpower that is trained and skilled. We supply manpower on temporary as well as long term basis.

Together with our associate companies we also supply manpower on short term as well as long term basis. Our manpower supply includes all categories of staff and workmen that are required for all services in residential as well as all commercial establishments including offices and High rise, Residential & Restaurants, hotels, Metro stations & mixed use development projects around the world.

We also take into consideration the urgent needs of clients and always respond positively. We believe in supplying manpower that is efficient whether they are required for skilled or unskilled responsibilities. As a leading manpower service provider we provide professionals who have the language skills to carry out works as instructed.

## MANPOWER FOR A HOST OF ENGINEERING SERVICES

### DESIGN ENGINEERS

- Architectural
- Structural
- Mechanical
- Electrical
- Plumbing
- MEP coordinators
- Piping designers

### REVIT MODELERS

- Architectural
- Structural
- Mechanical
- Electrical
- Plumbing
- coordinators
- Piping modellers

### DRAFTS MAN

- Architectural
- Structural
- Mechanical
- Electrical
- Plumbing
- coordinators

We have provided manpower for Designing software's like

- Revit • AutoCAD • Naviswork • Tekla • Aecosim
- Autocad plant 3D • Smart plant 3D • PDMS

# OUT SOURCING



## OUR CLIENTS



And Many More...





## Our Partners



chaos

### SVSBIM SOLUTIONS :-



91- 9652049235  
91- 9390888080



Info@svsbim.com  
www.svsbim.com

